

# THE WESTWIND WAVES NEWSLETTER

May 8, 2026

<https://westwind.sd38.bc.ca/>



@westwindwaves

## DISTRICT TRACK MEET ON MAY 21

All Grade 4 - 7 students will participate in a District Track and Field Meet on **Thursday, May 21st at Minoru Track**. Information has been sent home with your child.

Parents/Guardians are responsible for planning their child(ren)'s transportation to and from the Track Meet. Please work with your parent network to set up your own carpools. Let your child's teacher know if you need assistance with arranging transportation for your child.

All students should arrive at Minoru between 8:15 – 8:45 am. The event will end at approximately 2:15 pm. We encourage you to plan on arriving early as the parking lot will be very busy.

## LOOKING AHEAD TO NEXT YEAR...

Soon our staff will start the class placement process for our upcoming school year. Our goal is to make balanced classrooms and optimal learning environments. Because we need to prioritize balanced and equitable learning environments over peer preferences, Westwind staff will take the lead in this process. Of course, if there is new information about your child's learning or well-being that your child's teacher needs to know, and you have not yet had an opportunity to discuss this during the course of the year, then please make sure that your child's teacher is aware.

Please take a few minutes to read the following page for further details on the class placement process. If you have any questions, please reach out.





# CLASS PLACEMENT PROCESS FOR SEPTEMBER 2026

Please translate.

Information importante: traduisez s'il vous plaît. 重要通告，請找人譯讀。  
Mahalagang Pag-uulat: Pakisalin lamang. ਜ਼ਰੂਰੀ ਸੂਚਨਾ ਕਿਰਪਾ ਕਰਕੇ ਅਨੁਵਾਦ ਕਰ.  
**Важное объявление: Пожалуйста переведите.**

At Westwind, we are committed to creating balanced classes with learning environments that focus on students' areas of strength and growth. Class placements is a thoughtful, complex, and collaborative process which takes into account individual student needs in regards to academic, social and emotional progress, while aiming to create equitable learning communities for all students within the school. Having balanced classes throughout the school benefits all learners and contributes to having optimal learning environments throughout the school.

There are a number of student and school organizational considerations prior to making a placement decision. As a team of experienced, professional educators, we are sensitive to the needs of each student and we review these factors in an educationally sound manner to ensure the best placement possible for our students within existing school operational resources and constraints.

Student considerations in determining placement include (but are not limited to):

- student learning styles, strengths and needs
- social-emotional strengths and needs
- peers who are a positive influence for student learning
- students who are English language learners
- students who have exceptional needs
- students who are new to the school
- leadership potential
- friendships and potential new friendships

School organizational considerations include:

- creating heterogeneous (mixed ability) class groupings
- creating balanced academic and social/emotional educational classroom settings
- equitable class size and composition assignments as defined by teacher contract

The class placement process is designed to create balanced classrooms and optimal learning environments as much as possible. At the beginning of the year, remember that *all students need the gift of time* to feel settled in their new classes, to bond with their teacher, and to connect with peers in their classes. With support from both home and school, we wish for a great year of learning and growing for every student at Westwind.

Please contact Mrs. Tse or Ms. Reid if you have any questions regarding this process.



## READERS' CHOICE 2026

Once again, our Library Learning Commons is hosting a Reader's Choice Club. This year students in Grades 4-7 are invited to read and respond to selected novels. They are asked to score the novels on a scale of 1-10. In the end, the scores will be tabulated, and the "Readers' Choice" of favourite novel will be announced.

The novels selected represent a diverse set of interests and reading levels. Students in the club commit to reading at least 2 of the 6 books. Bi-weekly prizes will be awarded as students submit their responses and scores. Over 50 Westwind students have already begun their reading!

Thank you to Ms. Nunn for supporting our Readers' Choice Club!

## WELCOME TO KINDERGARTEN

Welcome to Kindergarten is scheduled for **Wednesday, May 20th**. This is an important opportunity for us to meet our newest students and their families and for our newest Westwind Waves to get a peek at their new school! Details will be sent to families very soon.



**LOST &  
FOUND**



## LOST AND FOUND

Our lost and found bin is overflowing again! Please free to take a look in the bin by the office if your child is missing clothing or coats. Now that the weather is getting warmer, there are many coats and hoodies being left outside after play times. Please collect items before they are donated to charity.



GOOD  
*Morning*

## ARRIVING TO SCHOOL ON TIME

welcome bell: 8:40am / classes begin: 8:45am

Thank you for helping your children get to school on time. We have noticed recently that many students have been arriving late. Arriving on time ensures a calm, stress-free start to the school day and sets your children up for success when they are able to enter the classroom with their classmates and hear important information that is given at the beginning of the day. Ideally, aiming to arrive at school by 8:35am is optimal. Your child's teachers and classmates thank you.

## USE OUR EARLY WARNING LINE FOR STUDENT ABSENCES

We would like to kindly remind parents to please call the Early Warning Line at 604-668-6498 if your child will be away. Leave a quick message with your child's name, division or teacher's name and the reason for the absence. When we don't hear from families, our office team spends a lot of time being attendance detectives to make sure everyone is safe and accounted for. Thanks for helping us start the day smoothly and efficiently!



## ACTION REQUIRED: SCHOOL CASH ONLINE

As we approach the end of the school year, please take a moment to log in to your School Cash Online account. There are several outstanding balances and upcoming field trip payments that need to be taken care of.

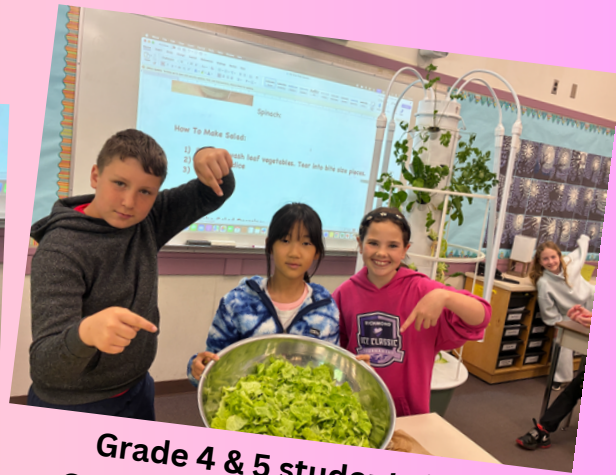
Don't forget to check that your account is set to receive email notifications so you stay in the loop on payment items. If you require Financial assistance with school related costs, please reach out to Mrs. Tse or Ms. Reid in the school office.

Thank you for helping us wrap up the year smoothly.

SchoolCashOnline  
©KEVGROUP

# May Moments of Joy

Grade 1 & 2 mathematicians in Ms. Hansen's class using Cuisenaire rods to create tens in creative ways.



Grade 4 & 5 students in Mrs. Carswell's class growing veggies using the Tower Garden, harvesting and learning how to make a salad.



Our expanded Sand Pit and Mud Kitchen are popular places to play at recess and lunch!



Yummy treats for the staff from our thoughtful and generous PAC



Grade 4 & 5 students in Mr. McLeod's class proudly showing off their brightly coloured, freshly made tie-dye shirts.

# Significant Dates in our Community



May 2026



**Asian Heritage Month:** A month dedicated to honour and recognize the many contributions of people of Asian ethnicity to B.C. and Canada's rich cultural society.

**Canadian Jewish Heritage Month:** A month to celebrate the richness of Jewish culture, heritage, and history in Canada.

**Speech & Hearing Month:** A month to shine a spotlight on communication health and the life-changing work of speech and language pathologists and audiologist.

**May 5: Dutch Heritage Day** was created in recognition of the sacrifices made by Canadians in the liberation of the Netherlands, as well as the contributions made to Canada by those of Dutch heritage.

**May 5: Red Dress Day** is a day to raise awareness about missing and murdered Indigenous women and girls.

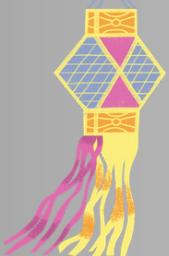


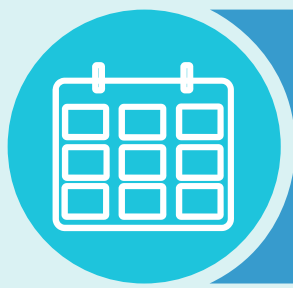
**May 10: Bear Witness Day** is the Anniversary of the Canadian Human Rights Tribunal first non-compliance order called for Canada to fully implement Jordan's Principle by May 10, 2016. Jordan's Principle ensures First Nations children receive the services and supports they need when they need them.

**May 26-30: Eid al-Adha** is an important celebration for many Muslim families. It marks the end of the Hajj pilgrimage and is a time for special prayers, family gatherings, and acts of generosity. We send warm wishes to all students and families observing Eid.



**May 31: Wesak and Buddha Day** is a significant Buddhist holiday that commemorates the birth, enlightenment, and death of Buddha.





# Important Dates 2025-2026

## **MAY**

Asian Heritage Month & Jewish Heritage Month

15: Non-Instructional Day

18: Victoria Day

20: Welcome to Kindergarten Event

21: Grade 4-7 District Track Meet

25: PAC AGM

27: Grade 7 Fun Day @ SLSS

28: Spirit Day - Multiples Day

29: Grade 7 Fun Day @ McMath

## **JUNE**

Filipino Heritage, Italian Heritage & Portugese Heritage Month

National Indigenous History Month

5: Sports Day

9: Band Performance for Div. 1-6 Families @ 1:15pm

12: Sports Day Rainout Day

18: Year-End Assembly @ 10:30 am

21: National Indigenous Peoples' Day

23: Grade 7 Farewell Assembly, Spirit Day: Formal Day

25: Year-End Summary of Learning Published on MyEd

25: Last Day of School for Students

26: Administrative Day (School Not in Session)



@westwindwaves



*At Westwind, we show kindness to self, others and place.*