

THE WESTWIND WAVES NEWSLETTER

December 5, 2025

<https://westwind.sd38.bc.ca/>



@westwindwaves

You're Invited to...

Westwind Waves **K-POP** Showcase



All classes will participate in K-Pop Dance lessons from a professional K-Pop instructor between December 8 - 12, culminating in a K-Pop Dance Showcase at the end of the week! THANK YOU to the PAC for raising funds to cover the cost of these lessons for every student!

All parents and guardians are kindly invited to join us for our **Westwind Waves K-Pop Showcase** on **Friday, December 12th at 1:30 p.m.** Doors will open at 1:00 p.m. Come cheer on our dancers and feel the K-Pop energy!!

WE GO OUTSIDE
RAIN, SHINE
OR SNOW!

Let's talk about spare clothes...



With the soggy season upon us; it is more important than ever that students have a spare change of clothes at school. Especially the little ones! Please make sure to include pants, socks, shoes and shirts!

THANK YOU!



SCHOOL-WIDE PICKLEBALL LESSONS

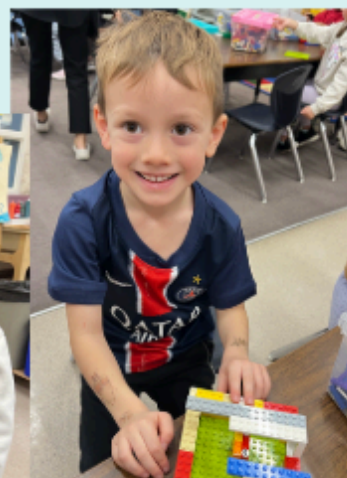
Thank you, Coach Nash and Coach Mel from Tennis XL and THANK YOU to our PAC for covering the cost of these lessons!! All of our Waves have had an opportunity to play pickleball four times in our school gym over the past few weeks.

We hope that the lessons have inspired some students to learn how to play a new sport - perhaps we'll see students out on public pickleball courts in the spring!



BRICK BY BRICK: EXPLORING STEM WITH LEGO

Several classes participated in interactive, lego-based workshops designed to integrate Science, Technology, Engineering, Arts, and Math (STEM) principles to foster problem-solving, creativity, and teamwork. Here's a peek into some creative minds at work!



A DIFFERENT WAY TO SHOW CREATIVITY! :)





WESTWIND ELEMENTARY RIDING THE WAVE OF KINDNESS

Kindness to self, others and place.

HOLIDAY HAMPER INITIATIVE

This season, let's make a difference together!

Westwind students and families are joining hands to support Richmond Family Place's Holiday Hamper Program: giving the gift of dignity, choice, and joy to local families in need. Instead of traditional hampers, we will be collecting gift cards from large retailers (Superstore, Walmart, etc.), empowering the parents to choose what best supports their family, from food and essentials to special holiday gifts.

Why It Matters

- Families can choose what they truly need
- Every card, no matter how big or small, brings hope
- Being kind feels amazing!

How You Can Help

- Bring a gift card of any amount to your classroom by **December 12th**
- Write a note or draw a kind message to include with the gift card
- Feel proud knowing your kindness is making someone's season brighter!

Let's ride the wave of kindness - together!

This year, our school is proud to support the
Richmond Family Place 2025 Holiday Hamper Program!



Our school goal is to raise \$2000! It sounds like a lot, but if every student donates only \$5 each, we would reach our goal in a flash! See our website for up-to-date info on how much we've raised so far. THANK YOU in advance for riding the Wave of Kindness and showing Kindness to Others!



INCLEMENT WEATHER: School Closure Notifications

In the event of inclement weather, the district will try to determine school closures by 6:30 a.m. Updates will be delivered using social media and school and district websites.

District Facebook: Richmond School District No. 38
Westwind Instagram: @westwindwaves



No radio or television announcement will be made saying that schools are open. **Only school closures will be announced by the media.** To reach as many people as possible - as quickly as possible - we work closely with our local media to share information. Listen to local radio stations and follow local news outlets online to also get information about the impact of severe weather or emergencies in our schools.

If snowfall begins while school is in session, in most circumstances, schools will remain OPEN until the end of the school day. If schools are open, and you wish to keep your child home due to weather conditions, you may do so. Please let your school know of this decision by leaving a message on the early warning phone number 604-668-6498.

Parents/guardians are responsible for their child's safe travel to school.

HEALTH CHECK: SHOULD I GO TO SCHOOL TODAY?

We have entered cold and flu season! We appreciate your support in keeping your child home when they are not feeling well. **Students should not come to school when they are sick.**

If your child is not feeling well, please continue to keep them home until their symptoms have resolved. If your child is experiencing fever, diarrhea or vomiting, the recommendation by Vancouver Coastal Health is for your child to stay home until they are **symptom-free for 24-48 hours** before returning to school. Thank you for helping keep other students, our staff and the whole community healthy before the holidays!

STUDENT ABSENCES - PLEASE LEAVE A MESSAGE

If your child is going to be absent or late, please phone the Early Warning phone number to leave a message (no texting). For appointments or days when your child needs to be picked up early, please communicate with your child's teacher ahead of time to let them know.

EARLY WARNING VOICE MAIL: 604-668-6498

Students who arrive late are asked to please sign in at the office upon arrival.





Important Dates 2025-2026



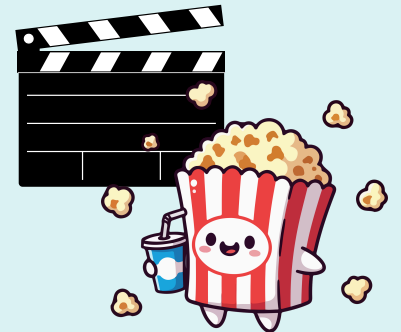
DECEMBER

- 8-12: School-Wide K-Pop Dance Lessons
- 12: K-Pop Dance Performance @ 1:30pm
- 12: PAC Hot Lunch – Yummy Slice & Booster Juice
- 18: Learning Update #1 (on MyEd Parent Portal)
- 19: PAC Snack Day
- 19: Spirit Day – PJs & Stuffedies
- 19: Last day of School before Winter Break



JANUARY

- 5: First Day back from Winter Break
- 12: PAC Meeting @ 6:30pm
- 21: Spirit Day: Creative Hair Day
- 23: PAC Family Movie Night
- 26: Pro-D Day – School not in Session
- 31: PAC Parent Pub Night



@westwindwaves



At Westwind, we show kindness to self, others and place.