

# THE WESTWIND WAVES NEWSLETTER

December 13, 2024

<https://westwind.sd38.bc.ca/>

 @westwindwaves

You're Invited to...

## SURFIN' THE TIMEWAVE: A ROCKIN' JUKEBOX



Step back in time for an afternoon of classic fun! Slip into your poodle skirts, leather jackets, and saddle shoes, and join us for a rockin' celebration.

We are excited to welcome everyone to our winter musical next week! Because our school is large and we are not able to accommodate everyone in the gym at the same time **Surfin' the Timewave: A Rockin' Jukebox** will be held over two days - December 18 and 19. Each day will be the same concert. Our gym doors will open at 1:00 pm and we aim to start our show at 1:30pm. Please attend only one of the shows.

Our show entrance will be from the rear doors of the gym (door #4 and #5) as our stage will be oriented differently than other assemblies.

Parking Lot reminder: Our school parking lot will be closed for parent parking as it is reserved for School and District Staff. Please consider walking or carpooling to Westwind, and park in the surrounding neighbourhood.

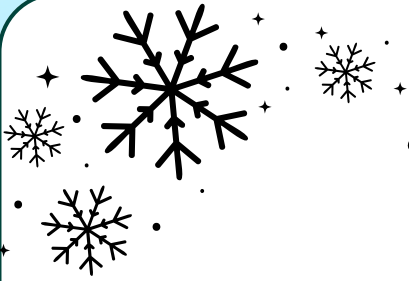
**Wednesday, December 18 - families of "odd" numbered divisions attend**

**Thursday, December 19 - families of "even" numbered divisions attend**



Families with children in both even and odd divisions can choose either of the days.





# Holiday RAFFLE

*Ticket Sales:* LAST CALL TO BUY TICKETS!

Purchase unlimited tickets for \$1/raffle ticket on MunchaLunch until Tonight at midnight!

**Prize Draw Dates: December 16-20**

**Leadership Club** students have chosen a charity to support. Rainbow Refugee is an organization dedicated to assisting LGBTQ+ individuals who are fleeing persecution in their home countries. These individuals often face severe discrimination, violence, and even life-threatening conditions simply because of their identity. By donating to this cause, we can make a tangible difference in the lives of these vulnerable individuals, providing them with resources, support, and opportunities to rebuild their lives in safety. This act of generosity aligns with the values of our Student Leadership Club, such as advocating for human rights, fostering diversity, and creating a more just world.



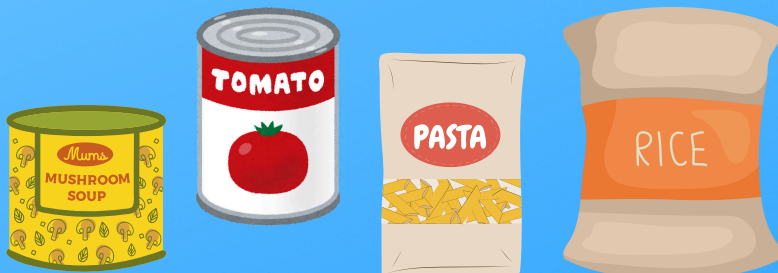
## THE WESTWIND LEADERSHIP CLUB FOOD DRIVE



**On Monday morning (December 16) please bring your food bank donations to your classroom or the office.**

### Top 5 most needed items:

- Canned protein – chicken, turkey, meat, fish, and vegetarian
- Peanut butter
- Canned tomatoes, vegetables, and fruits
- Rice, pasta, and whole grains
- Soup and healthy tinned meals



## DID YOU KNOW?

### RICHMOND FOOD BANK FACTS

55% of our clients are temporary users, most of whom are suffering through a crisis.

25% of our clients are children under 18.

30% could be self-sufficient, but have cost of living concerns.

15% are long-term users with multiple barriers to employment, including chronic illness, mental health problems, or disabilities.

Roughly 4% are transients and have no fixed address.





## ***Signing in to the MyEducation Parent Portal Learning Updates published Thurs, Dec 19***

**Learning Updates will be published electronically by PDF in your MyEducation Parent Portal at the end of the day on Thursday, December 19.** The MyEd Parent Portal is used to view and access these updates. Paper copies of Learning Updates are not sent home. Your MyEd Parent Portal account also gives you access to attendance records and student/pupil numbers. A quick link is available on our school website, as well as instructions on how to register for and access the MyEd Parent Portal. Now is the time to try to log on to troubleshoot any issues before our Learning Updates are published in just a few weeks!

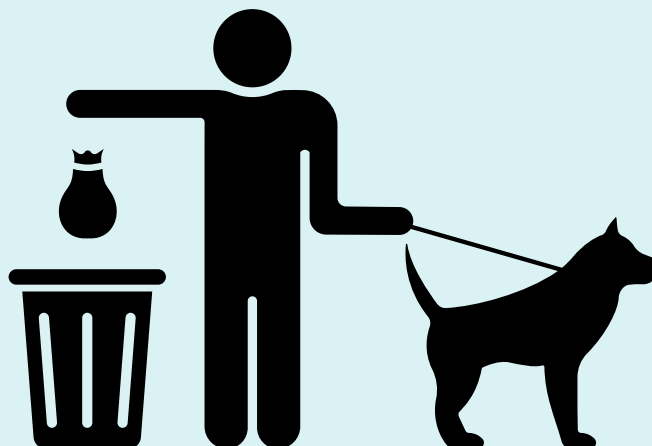


### **PARENT TECH SUPPORT**

If you need tech support with your MyEd Parent Portal account, please email the SD#38 parent tech help desk: [myedparentportal@sd38.bc.ca](mailto:myedparentportal@sd38.bc.ca)

## **FRIENDLY REQUEST: PLEASE PICK UP AFTER YOUR DOG**

In our large neighborhood, we don't always know who is leaving dog waste behind, but it's becoming a concern, especially on our school grounds. Let's all do our part by picking up after our dogs and reminding our neighbours to do the same. Together, we can keep our community clean, safe, and welcoming for everyone—especially for children and pedestrians!



Please translate.

Information importante: traduisez s'il vous plait. 重要通告，請找人譯  
Mahalagang Pag-uulat: Pakisalin lamang. ਜ਼ਰੂਰੀ ਸੂਚਨਾ ਕਿਰਪਾ ਕਰਕੇ ਅਨੁਵਾਦ  
Важное объявление: Пожалуйста переведите.

**PARKING LOT REMINDERS**

**! ATTENTION PLEASE !**

**STAY HOME  
WHEN SICK**



**REMINDER**

**DROP-OFF / PICK UP ZONE:** Drivers MUST STAY with their vehicle. NO parking in this lane, please.

**DRIVE-THRU LANE:** NO stopping or blocking the drive through lane to allow traffic to flow smoothly. Keep moving please.

**Our school parking lot is RESERVED for Westwind and District STAFF.** Parking spots are not meant for pick-up/drop-off purposes.

**HEALTH CHECK: SHOULD I GO TO SCHOOL TODAY?**

We have entered flu season! We appreciate your support in keeping your child home when they are not feeling well. **Students should not come to school when they are sick.**

If your child is not feeling well, please continue to keep them home until their symptoms have resolved.

### Winter Solstice: December 21

The shortest period of daylight and the longest night of the year. This date is celebrated by, and has significance to, multiple cultures and religions.

### Qviasukvik: December 24 - Jan 7

Inuit winter feast and festival observed by the Inuit, Yupik, Aleut, Chukchi, Iñupiat, and NunatuKavut. Celebrates the coming year and placates the roaming spirits for good luck in the year to come.



### Hannukah: December 25 - Jan 5

Hannukah, or the Festival of Rededication, celebrates the rededication of the Temple in Jerusalem after its defilement by the Syrian Greeks in 164 BCE. The eight-day festival has become a beloved and joyous holiday. It is also known as the Festival of Lights and usually takes place in December, at the time of year when the days are shortest in the northern hemisphere.

### Christmas Eve / Christmas Day: December 24 / 25

The evening or entire day before Christmas Day, the festival commemorating the birth of Jesus. Christmas Day is a Christian festival celebrating the birth of Jesus. Since the early 20th century, Christmas has also been observed as a cultural and secular holiday by Christians and non-Christians.





## The Middle Years Development Instrument (MDI) is coming to your school in January/mid-March!

The Richmond School District has partnered with the Human Early Learning Partnership (HELP) at the University of British Columbia to measure and promote children's social and emotional development, health, well-being, and assets through the Middle Years Development Instrument (MDI). The Middle Years Development Instrument (MDI) is a self-report questionnaire that asks children in middle childhood about their thoughts, feelings and experiences. The MDI is the first survey of its kind to gather information about the lives of children both in school, in the home and in the community, from their own perspective. The survey questions align with the BC Ministry of Education's K-12 curriculum, which includes a focus on promoting children's personal and social competencies.

**Grade 5 and 8 students are invited to complete the MDI during class time between: January 14th and March 14th, 2025.**

For more information and to view the questionnaires:

<https://earlylearning.ubc.ca/monitoring-system/mdi/mdi-overview/>

Parent FAQs:

<https://earlylearning.ubc.ca/monitoring-system/mdi/parent-caregiver-info/>

If you don't want your child to participate, please contact your child's teacher, fill out the withdrawal form at the end of the parent/guardian informed passive consent letter, or contact the MDI project staff at [mdi@help.ubc.ca](mailto:mdi@help.ubc.ca).

## IMPORTANT DATES 2024-2025

- Dec 16: Leadership Club food drive - Monday morning  
Dec 16-20: Holiday Raffle Prize Draws  
Dec 18: Winter Concert (doors 1:00pm / showtime 1:30pm) ODD divisions  
Dec 19: Winter Concert (doors 1:00pm / showtime 1:30pm) EVEN divisions  
Dec 19: Learning Updates published on MyEd Parent portal  
Dec 23-Jan 3: Winter Break - No School  
Jan 27: Professional Development Day - No School  
Feb 12&13: Early Dismissal @ 1:45pm for Learning Updates  
Feb 14: Professional Development Day - No School  
Feb 17: Family Day holiday - No School  
Mar 17- 28: Spring Break - No School  
Apr 18: Good Friday - No School  
Apr 21: Easter Monday - No School



### Dress for the weather!



winter coat



rain coat



rain or  
waterproof  
snow boots



mittens



hats



scarf



extra clothing  
including socks



@westwindwaves



*At Westwind, we show kindness to self, others and place.*