

THE WESTWIND WAVES NEWSLETTER

September 27th, 2024

<https://westwind.sd38.bc.ca/>



@westwindwaves

WESTWIND WAVES WEAR WEDNESDAYS – SPIRIT WEAR SALE

On Wednesdays we show our school spirit by wearing our Westwind Waves spirit wear! We will show our school spirit not only on our weekly school spirit days, but also when participating in school events such as cross-country running, the District Track Meet and Sports Day. We know that students who are new to Westwind will not have their Westwind Wave wear yet, so we encourage you to wear blue or yellow if you can. Starting next week, between October 1 - 11, the Westwind PAC will be collecting "gently used" school spirit wear which will be sold to families at a discounted rate. Refer to the PAC Community Update for more details! After that, we will plan for a NEW Westwind spirit wear sale.

STUDENTS WILL GO OUTSIDE AT RECESS AND LUNCHTIME RAIN OR SHINE.

Dress for the weather!



winter coat



rain coat



rain or
waterproof
snow boots



mittens



hats



scarf



extra clothing
including socks

STUDENT ABSENCES & ARRIVING TO SCHOOL ON TIME

Thank you for helping your children get to school on time. Arriving on time ensures a calm, stress-free start to the school day and sets your children up for success when they are able to enter the classroom with their classmates and hear important information that is given at the beginning of the day. Arriving a few minutes early is even better, as it provides a social opportunity for your child to connect with classmates before the day begins. Ideally, aiming to arrive at school between 8:30 – 8:35am is optimal.

EARLY WARNING VOICE MAIL: 604-668-6498



If your child is going to be absent or late, please phone the Early Warning phone number to leave a message. At this time, our office phones do not accept text messages and the Westwind school email is not monitored quickly enough in the morning.

Students who arrive late are asked to please sign in at the office upon arrival. You will be contacted by the school office if you have not notified us of your child's absence or if they have not signed in late.

For extended absences or vacations, parents should notify the teacher and/or school office in writing. This is a perfect opportunity to send us an email to westwind@sd38.bc.ca. As well, an Extended Absence Form may need to be completed.



What if my child needs to leave SCHOOL early?

Please send a note in your child's agenda and/or email your child's teacher with the time your child needs to leave. We appreciate your understanding that classrooms are busy places and to please allow enough time for your child to gather their belongings, walk down to the office and sign out. As a courtesy to your child's teacher and classmates, if possible, please have your child leave at a natural break (e.g. recess 10:10 am or lunchtime 11:50 am) to limit disruptions to our learning environment. Thank you for your kind consideration.

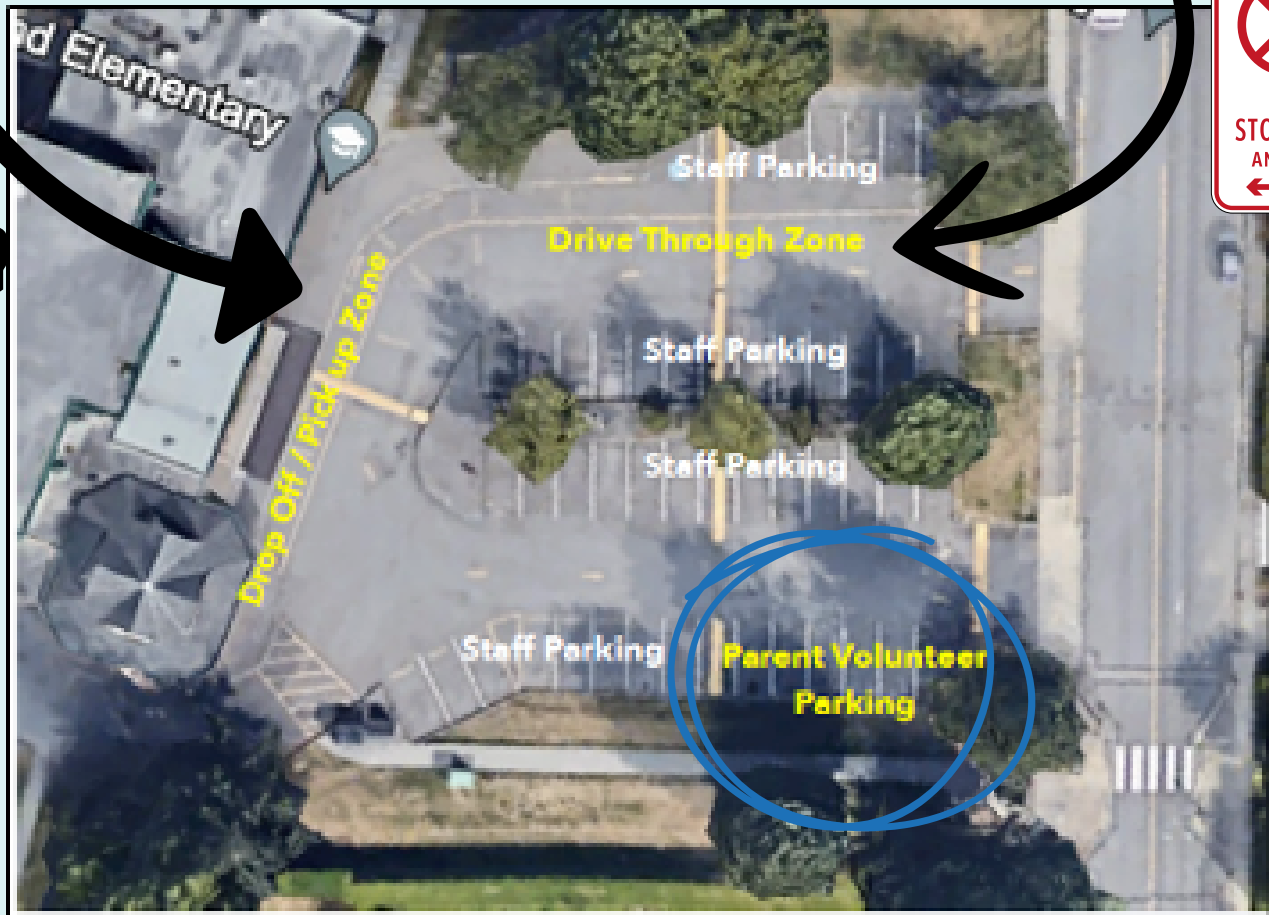
At Westwind, we show kindness to self, others and place.



SAFETY IN OUR PARKING LOT - REMINDER!

DROP-OFF / PICK UP ZONE: NO parking in this lane, please, especially directly in front of the school. Drivers, you MUST stay in your vehicle, as you may be asked to move to allow for school buses or emergency vehicles to enter the parking lot.

DRIVE-THRU LANE: Please NO stopping or blocking the drive through lane to allow traffic to flow smoothly.



The parking lot is reserved for our growing Westwind Staff, and parking spots are often needed before and after school for district staff or staff who are returning to school from meetings off-site.

Parking spots are not meant for pick-up/drop-off purposes.

If you do need to exit your vehicle, please leave enough time to park in the neighbourhood and walk to meet your child.

If you are a parent volunteering in the school during the day, there are a few designated parking spots in the southwest corner of the lot that you may use.

Thank you for helping to keep our parking lot safe for everyone.



HOT TOPIC OF THE MONTH

CLASS PLACEMENT PROCESS AND COMBINED CLASSES

Class Placement Process

At Westwind, we are committed to placing students in balanced classes that focus on their areas of strength and growth. Class placements and class organizations are a thoughtful, complex, and collaborative process which takes into account individual student needs in relation to their academic, social and emotional progress to create equitable learning communities within the school.

There are a number of student and school organizational considerations prior to making a placement decision. As a team of experienced, professional educators, we are sensitive to the needs of each student and review these factors in an educationally sound manner to ensure the best placement possible for our students within existing school operational resources and constraints.

Student considerations in determining placement include (but are not limited to):

- student learning styles, strengths and needs
- social-emotional strengths and needs
- peers who would be a positive influence for student learning
- English language learners
- students with exceptional needs
- students new to the school
- leadership potential
- friendships and potential new friendships

School organizational considerations include:

- creating heterogeneous (mixed ability) class groupings
- creating balanced academic and social/emotional educational classroom settings
- equitable class size and composition assignments as defined by contract

You can see that the class placement process is designed to create balanced classrooms and optimal learning environments as much as possible. At the beginning of the year, *all students need the gift of time* to feel settled in their new classes, to bond with their teacher, and to connect with peers in their classes. With support from both home and school, we wish for a great year of learning and growing for every student at Westwind.

Please feel free to contact Mrs. Tse or Ms. Reid if you have any questions regarding this process.



HOT TOPIC OF THE MONTH

CLASS PLACEMENT PROCESS AND COMBINED CLASSES

Combined Classes

Combined classes consist of students in consecutive grades (typically two), grouped together in one class. Multi age/combined configurations are very common across our district, the province, and country. All students in Richmond will experience being in a combined class throughout their elementary school years.

Often the terms “combined/multi-aged classes” and “split classes” are used synonymously. The term “split class” refers to two separate grade groups housed within one classroom. Each of these groups are taught separately from the other and rarely is their entire class taught together.

In Richmond, we use the term “combined classes” since each classroom is viewed as one learning community, where parts of the curriculum are taught together, and students are given a variety of access points to support their individual level of learning. The BC Ministry of Education curriculum includes a continuum of proficiency where students will see the same topics throughout their school career, with each encounter increasing in complexity and reinforcing previous learning.

See <https://curriculum.gov.bc.ca> for more information.

Debunking a common myth: Students in the higher grade of a combined classes are not “held back” and students in the lower grade of a combined class are not “accelerated.”

Classroom reality: Every student, no matter their grade level, is given work suitable to their capabilities and level of learning.

Within any one grade or age, there is a wide range of abilities, requiring differentiation in instruction. Children learn continually and their development does not occur in linear steps according to their grade level or age. The role of the educator is to teach to where students are at and to closely monitor their development by being in tune with each learners' needs using quality instructional practices that will support each student’s growth and development. Whether your child is in a grade 3/4 class or a grade 4/5 class is not important, *as teachers will teach **your child***, not their grade level.

Please feel free to contact Mrs. Tse or Ms. Reid if you have any questions.

STUDENT & FAMILY AFFORDABILITY FUND

Last spring, the provincial government announced a renewal of one-time funds for the Student and Family Affordability Fund.

This fund is designed to assist families who require financial assistance with school-related costs in areas such as school and course fees, school supplies and course materials, field trips, school-related extracurricular opportunities and clothing and footwear required for sports and school activities.

Please reach out to Mrs. Tse (stse@sd38.bc.ca) or Ms. Reid (ereid@sd38.bc.ca) in the school office if you are in need of assistance. As always, all requests will be treated with dignity and your privacy will be respected. We want to work with our families to ensure that our students, your children, have everything they need in order to be successful at school. Please do not hesitate to reach out if we can help.



SCHOOL WIDE RUNS

On Mondays, Wednesdays and Fridays at 1:45pm (when the weather is decent), students will head outside for a jog/power walk. This will no doubt create a solid foundation for our cardiovascular fitness and overall health and wellness. Please make sure that your child has suitable running shoes so that they will be comfortable being active.

OUTDOOR EDUCATION

Our Grade 6s and 7s are getting excited about their three day trip to Camp Jubilee in October! A huge thank you to the Westwind PAC for raising funds to subsidize the cost for camp.

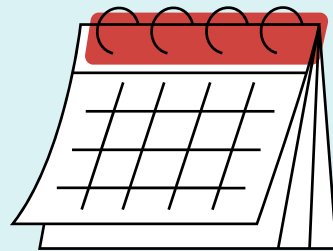


At Westwind, we show kindness to self, others and place.



IMPORTANT DATES 2024-2025

- Sept 30: Truth and Reconciliation Day - No School
- Oct 1-11: 'Gently used' Westwind Wear collection
- Oct 5: Parent Pub Night (6:30-9:30 @ Steveston Built)
- Oct 9-11: Grade 6&7 Outdoor Education @ Camp Jubilee
- Oct 14: Happy Thanksgiving - No School
- Oct 17: PAC Halloween Student Dance!
- Oct. 21: PAC Meeting @ 6:30 on Teams
- Oct 22: District Cross Country Run (Garry Point)
- Oct 23-24: Early Dismissal (1:45pm) for Learning Updates
- Oct 25: Pro D Day - No School





**EVERY
CHILD
MATTERS**

**NATIONAL DAY FOR TRUTH &
RECONCILIATION
SEPTEMBER 30TH**

**Rosh Hashanah
October 2nd - 4th**



Rosh Hashanah, which translates from Hebrew to mean “the head of the year,” is one of Judaism's holiest days. The two-day celebration marks the start of the Jewish New Year and is filled with traditions, like eating a round challah and saying prayers near a body of water.